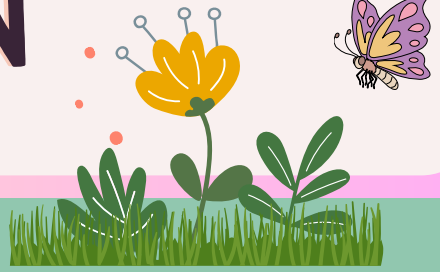


THE SPECIAL EDITION

APRIL 2024



Hello Coop Family!

Spring has arrived and we are on the final stretch to the end of the year. This is an incredibly busy time as everyone is working diligently to complete IEPs, finish up new evals, placements, and put those final touches on corrections as needed. THANK YOU SO MUCH for your extra efforts in getting these year end tasks completed. Your hard work and dedication to continuing to meet student needs to the very end of the year is very much appreciated!

As most of you know, unfortunately, I have suffered a back injury after moving our offices at the Coop. I appreciate so many of you checking in, calling and sending text messages. Your kindness means the world! I have numbness in my right foot and what appears to be restricted circulation to my foot and calf. As a result I am on medical restriction for driving and am waiting for results to determine next steps for care. One day at a time, as this is a set back that is taking some time to heal. Please don't hesitate to reach out if you need support or have questions, I am here to help in any way I can as I am working remotely.

As we take time to reflect on the growth we have seen in our students throughout this year, it is with much gratitude as our students are stronger for learning with you on their educational journey. Your commitment to helping our students overcome challenges and find success has a profound impact on their lives, engaging perseverance needed to build a bright future. Thank you for all you do to help our students discover their strengths and achieve their goals. Each day your hard work makes a difference!

Enjoy the home stretch! Deb

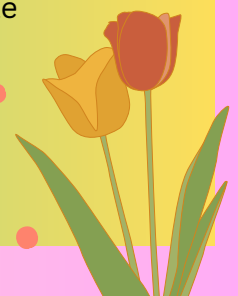
Are you interested in an opportunity to become LETRS trained?

LETRS stands for Language Essentials for Teachers of Reading and Spelling (LETRS®). LETRS® is intensive professional learning to empower teachers to understand the science behind why students struggle to read through learning evidence-based instructional practices. LETRS® provides details for educators to understand the what, why, and how of scientifically based reading instruction including:

- What must be taught during reading and spelling lessons to obtain the best results
- Why reading instruction has several key components and how they are related to one another
- How to explain spoken and written English language structures
- How to interpret individual differences in student achievement
- How to implement instructional routines, activities, and approaches and differentiate instruction

[Registration Link for August 2024 LETRS Training Cohorts](#)
(go to the bottom of the page)

***Registration Deadline is May 31, 2024**



REMINDERS:

We are excited to host an All Related Service Providers Training with Rebekah Helget tomorrow from 8:00 - 3:30 p.m. at the PLC. Please bring your computer so you are able to access materials from a google folder. 6 CEUs are available for your attendance. We are looking forward to a great day of learning with our OTs, PT, SLPs, SWs, Psychs!

New Teacher Training, Tuesday April 9, 2:30-4:30 pm ~ Sped Conference Room

One Wamego A Meeting, Friday, April 12, 2:30-3:30 pm

One Wamego B Meeting, Friday, May 3, 2:30-3:30 pm
(Both meetings will be held in the PLC Bldg.)

Medicaid Logs

Quarterly due dates are as follows:

May 24 (March 18-May 21)

Please submit these to Mary Bates by the due dates.



Thank you to our Paraprofessionals for all you do to support our students and teachers! You are very much appreciated!

Items Needed: We are in need of some “gently used” items for our Life Skills Classes: microwaves, toaster ovens, and paper shredders. If you have items to donate, please bring them to the Coop.



Diana Phillips
Jennifer Nider
Mary Bates
Robin Laughlin

Happy
Administrative Professionals'
Day

Wednesday, April 24, 2024 *



ESY dates are:

USD 323

May 28-31, June 3-6, and June 10-13
7:45-11:45 am

USD 320/329

June 3-6, June 10-13, and June 17-20
7:45-11:45 am
(Monday-Thursday for 3 weeks)

If you haven't already done so, PLEASE turn in your paperwork for your students who qualify **IMMEDIATELY!**

IMPORTANT REMINDER: If you are referring any students for ESY, **you MUST provide daily lesson plans and all materials for student learning for the whole duration of ESY.** These lesson plans and materials must be turned in no later than your check-out time with the Coop, and can be left in the Coop for pickup.

This process will be followed for hiring Dr. Nauerth's replacement.

Special Education Director Replacement Process

Timeline for Replacement

We do not have a timeline for a replacement. We hope to be able to get a number of qualified candidates to have a good pool. The 3 superintendents are currently evaluating applications as they come in.

Selection Process

Screening Committee:

The 3 superintendents will be screening the applicants and determining the candidates to be interviewed. If there are more than 3 or 4 quality applicants, we will enlist a larger screening committee to narrow down the interviewees. The superintendents will contact the selected applicants to set up interview times.

Interview Committee:

- An interview committee will be used during the formal interview process. Proposed that it be composed as follows:
 - One (1) member from each BOE
 - One (1) SPED teacher from each district
 - One (1) Speech/Language Pathologist
 - One (1) School Psychologist
 - One (1) Paraprofessional
 - One (1) administrative professional in the SPED office
 - Superintendent from each district
 - 13 people total

Meet & Greet:

It is hoped that there will be a time for staff to meet and visit with each of the candidates. The meet and greet time will be outside of school hours and available to all SPED staff. The meeting will be held in the PLC.

Other:

We plan to have each candidate meet briefly with our administrative team before the interview process. This will be the admin team from the entire COOP. This meeting will take place in the PLC.

Tour:

We also plan to have the candidate be part of a building tour as well. Each candidate will be transported to different programs at each represented district before the formal interview process begins.

END OF YEAR CHECK-OUT 2023-2024

It's hard to believe our Coop check-out process will be here before we know it. An email from Robin will be coming soon about sign-ups and the checklist. Every sped teacher and provider **MUST** complete the check-out process at the Coop. REMINDER: You will meet with Coop office staff and do a final reflection meeting with Deb.

***All paperwork and files must be complete by your check-out appointment.**

****The IEP Due Date is Friday, April 12!****

Check-Out dates and times are as follows:

USD 329

Wednesday, May 15 - 8:00am-noon
Thursday, May 16 - 8:00am-noon and 1:00-4:00pm

USD 323

Friday, May 17 - 8:00am-noon and 1:00-4:00pm
Monday, May 20 - 8:00am-noon and 1:00-4:00pm

USD 320

Tuesday, May 21 - 8:00am-noon
Wednesday, May 22 - 1:00-4:00pm
Thursday, May 23 - 8:00am-noon and 1:00-4:00pm



**Thank you to all of our teachers
for completing the DLM!**

**ALL IEPs are due by Friday,
April 12. Exception: newly
placed or move-in students.**

Google Form for EOY Submissions - Please use this form to let Paige Padgham know of events that should be shared at our end of year All Staff Breakfast gathering. This way, everything is kept in one location that she will be able to access easily.

EOY PowerPoint Info Submission (Fill Out Form)

TASN WEBINAR TRAINING

**Dynamic Learning Maps
Training Webinars:
3:00 - 4:00 pm
April 11, 2023**

Please contact
Robin Laughlin at
the Coop if you plan
to be there.

*Previous webinars are available to view on the
KSDE website.*

<https://www.ksde.org/Agency/Division-of-Learning-Services/Career-Standards-and-Assessment-Services/CSAS-Home/Assessments/Dynamic-Learning-Maps-DLM-Essential-Elements>

Kansas State Department of Education (KSDE) Transition Tuesday Webinars for 2024

April 19- Incentivizing Employment- Working Healthy WORK and STEPS training

May 14- VR Pre-Employment Transition Services 101 Referral to Closure

All webinars are recorded and posted at
www.ksdetasn.org from 3:30-4:30 p.m.
Registration: Register for all events at the following
link: https://ksdetasn.org/event_groups/wdCrOg
Please share!

Please contact Stacie Martin, smartin@ksde.org for
any questions.

Project Peace - A community event learning how to better understand a child's undesirable behaviors and how to support them using peaceful approaches.



Erin and Cheryl volunteer to show precipitating factors.



Exciting news! As you know our Coop vehicles have served us long and well. Unfortunately, they are not as reliable as they once were. We want to ensure our team is safe when traveling to conferences out of the area.

Working hard and being fiscally responsible as a Coop has put us in a position where our Coop vehicles are now able to be on a replacement schedule to replace a Coop car every other year, beginning this year. Pending BOE approval we will replace a Coop car with a 2024 Hyundai Elantra SEL with navigation, with fuel efficiency of 30 miles per gallon in the city and 40 miles per gallon on the highway. Being in a reliable Coop car will help keep everyone safe with peace of mind.

When requesting a vehicle for your future conference attendance, be sure to request if the newest in the Coop fleet is available!



Ms. Sisco's and Mr. Ulsaker's Job Skill students made ice cream at Flint Hills Pints in Alma.



World Autism Awareness Day

Tuesday, April 2, 2024



JOB OLYMPICS UPDATE

Another successful Job Olympics occurred on March 6th with 121 students from 14 area high schools competing. We appreciate all those who donated their time to help! Thank you to the following judges from

USD 320: Scott Meitler, Carole Hay, Erin Hudson, Alyssa Smith, Deb Nauerth, Cristi Weigers, Jennifer Nider, Diana Phillips, Teri Bailey-Johnson and Madison Jensen.

Also, the event couldn't be complete without the following judges from the community! Shelley Rickstrew, Darci Hildebrand, Darci Blume, Ashley Wolfrum, Sheryl Wohler and Terra Miller. A special thanks to the Wamego Cheerleaders who went along to help make the day special: Taylor Umschied, Clara Burgess and Bella

Stream. ~ Stephannie Hegarty, Wamego Special Services Transition Coordinator



A HUGE shout out and THANK YOU to Freddy's and Todd and Mary Ulsaker for their support of our Job Olympics team!



Some of our awesome judges from the Coop.



This is the Job Olympic participants, cheerleaders, and staff having fun at Job Olympics 2024.

SAVE THE DATES

2024-2025 Back to School Meetings

Welcome Back - New Certified Staff/Providers

Wednesday, July 31
PLC Building
8:30am-Noon & 1:00-4:00pm
(lunch on your own)

ALL Certified Staff/Providers

Thursday, August 1
PLC Building
8:30am-Noon & 1:00-4:00pm
(lunch on your own)

Para Training

Wednesday, August 7 in PLC Building
9:00am-Noon: ALL Paras
1:00-4:00pm: NEW Paras

2024-2025

Child Find Screenings

August 7 - Wamego
September 27 - Westmoreland
December 6 - Alma
January 24 - St. George
March 28 - Wamego



2024-2025 NCI Training Dates

- Monday, July 29 ~ Initial, 8:00am-3:00pm ~ PLC Bldg
(1 hr. lunch break on your own)
- Tuesday, July 30 ~ Refresher, 8:30am-Noon ~ PLC Bldg
- Tuesday, July 30 ~ Refresher, 12:30-4:00pm ~ PLC Bldg
- Friday, August 30 ~ Initial, 8:00am-3:00pm ~ PLC Bldg
(1 hr. lunch break on your own)
- Friday, September 27 ~ Refresher, 8:30am-Noon ~ PLC Bldg
- Friday, September 27 ~ Refresher, 12:30-4:00pm ~ PLC Bldg
- Friday, January 10 ~ Initial, 8:00am-3:00pm ~ PLC Bldg
(1 hr. lunch break on your own)
- Friday, March 28 ~ Initial or Refresher as needed ~ PLC Bldg

SAVE THE DATE!



Kansas National Education Association

Career	Custodial	Food
Health	Thank You For All You Do!	Trade
Technical	Paraprofessional	Transportation

Friday - Saturday
April 12-13,
2024
KNEA Headquarters

KNEA Conference for Education Support Professionals

APRIL BIRTHDAYS

Kayla Tornay - 2

Bree Porting - 3

Michelle Kirk - 8

Suzette McGuire - 16

April Shipp - 17

Chloe Snell - 20

Sara McCarter - 24

Ginny Gillmore - 2

Jackson Goodmiller - 7

Cindy Johnston - 14

Gloria Lewis - 16

Susan Copeland - 18

Savannah Barvais - 23

Raleigh Willi - 25



HAPPY NATIONAL OCCUPATIONAL THERAPY MONTH

We LOVE our Occupational Therapists!
YOU'RE THE BEST!

THANK YOU to
Amanda Marfield
Krystal Nelson (OTA)

Olivia Fry

for all you do for our students!

NOW IS A GREAT TIME TO REVIEW YOUR CASELOAD AND REMAINING IEP DUE DATES.

Be sure to move up IEPs as needed to help ease the spring marathon. Reminder, the due date for all regular IEPs is April 12th. Only new placements, EC transitions, or move-in IEPs should take place after April 12. Looking ahead to fall 2024 IEPs, any annual IEP that is due on or before September 15 should be held in the Spring by April 12. Every team member in the Coop appreciates this so they are not scrambling with a beginning of the year IEP when students transition to them. Thank you for planning ahead.

INSPIRATION



Spring is when you feel like whistling even with a shoe full of slush.

"Spring is nature's way of saying, 'Let's party!'"

—ROBIN WILLIAMS



"A LOVELY REMINDER OF HOW BEAUTIFUL CHANGE CAN TRULY BE"



Let your dreams blossom

Blossom

